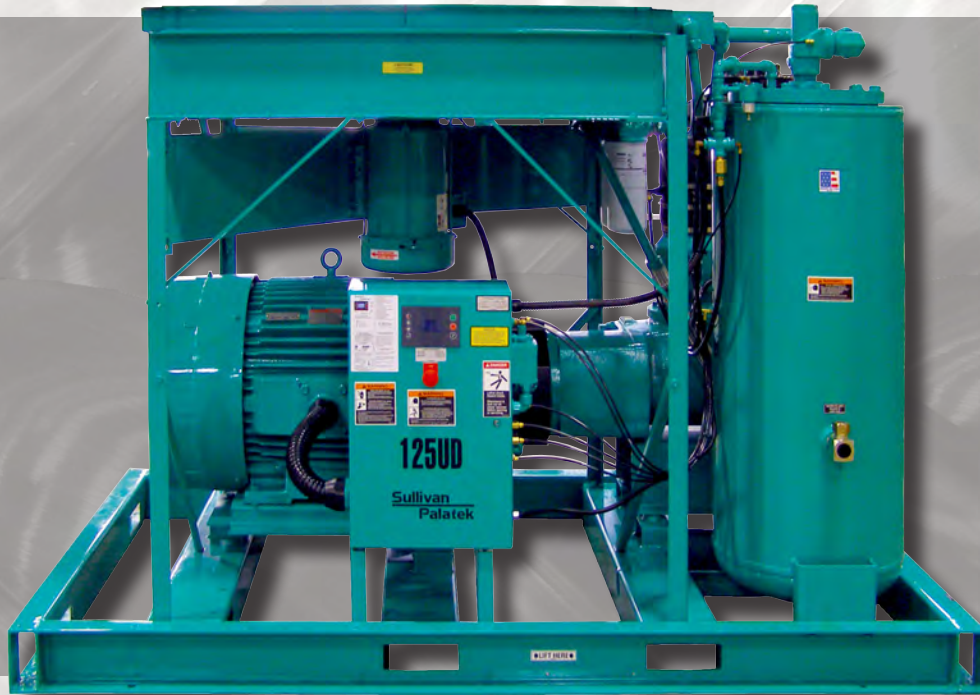


# Sullivan Palatek®

## UD SERIES COMPRESSORS



### INDUSTRIAL AIR COMPRESSOR 40 - 400 HP UPDRAFT MODELS

- **Electric Motor** - 460/575/3/60 standard (208/230/3/60 optional on most models)
- **Motor Starter** - 460 volt, full voltage magnetic starter with 115 volt controls, NEMA 1
- **Protective Devices** - Class 20 Solid State overload relay, high air temperature, high pressure shutdown
- **Lube Fill & Level Elbow** - One piece fluid fill elbow and level indication sight glass
- **Separator Tank** - ASME coded 200PSIG tank, relief valve, minimum pressure/check valve
- **Cooling System** - Cooling system with own fan motor, large side by side lube cooler and air aftercooler
- **Air Intake Filter** - Oversize dry type with easily replaceable elements
- **Inlet/check valve** - One piece housing for dependable performance and complete modulation (40-250HP)
- **Inlet/check valve** - Dual housing for dependable performance and complete modulation (300-400HP)
- **Coupling & Drive** - Compressor is flange mounted to motor C-face for positive alignment and direct driven
- **Controls** - Full modulation, solenoid controlled for smooth lowest possible no load power

*“The Ultimate Performance Rotary Screw Air Compressor”*

*“The Ultimate Performance”*

# Sullivan Palatek®

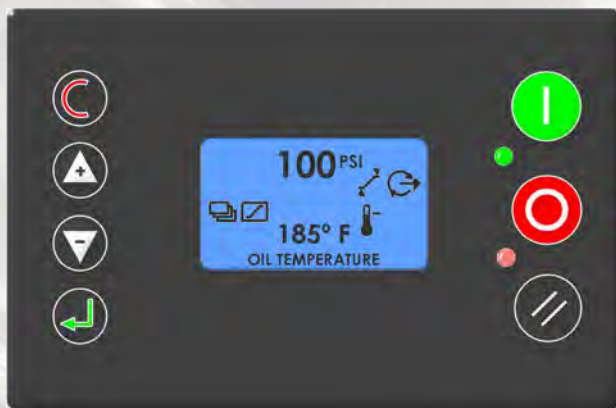


## **The advantages of owning a Sullivan-Palatek Rotary Screw Air Compressor**

Sullivan-Palatek provides low maintenance, high performance and one of the most reliable air ends in the industry.\*

Our advanced design features oversize radial thrust bearings and precision working rotary screws that provide virtually no wear. Less friction, less heat, compressor runs cool and the circulating fluid lasts longer.

\*Platinum and Platinum Plus Warranties Available



## **T1 Microprocessor**

### **Pressure Schedule:**

Program your daily operating schedule, and allows shut off during factory shut down or change pressure settings up to 28 different times per week.

### **Built-in Sequencer:**

Will control up to 8 machines including VFD's as the trim machine.

### **Dedicated Pressure Display Always Shown.**

### **Configurable Auxiliary Display:**

Several choices: compressor status ~ differential pressure ~ run or loaded hours ~ service time remaining ~ compressor operating temperature.

### **Unload Pressure:**

Easily programmed to suit plant requirements.

### **Analog Output:**

Possible usage for temperature display on updrafts.

### **Digital Load and Unload Settings:**

Allows tighter control of pressure without the need for add-on line pressure flow controller devices.

### **RS485 Communication:**

For multiple machine functions, sequencing and software updating.

Easily read output, can be programmed in English, French and Spanish languages.

### **Programmable Features**

Auxiliary alarm or fault output.

Additional end user alarm or shutdown programmable for normally open or closed contact devices.

### **Digital Settings:**

Drain times

Load and unload pressures

Modbus address

Power failure auto restart

Shut down for excessive temperature or pressure

Stop run-on time

Time for unloaded start

Fan is programmed to come on only after temperature has risen high enough.

# ance Rotary Screw Air Compressor”

## Standard Features:

### Electric Motor

- 230/460 volt (40-200HP)
- 460 volt (300-400HP)
- NEMA T-frame with C-face Flange
- Open drip proof squirrel cage induction type
- Premium efficient design

### Motor Starter

- 460 volt magnetic full voltage starter with 115 volt controls
- UL, ETL listed NEMA 1 enclosure
- Three-phase overload with reset button
- Cooling fan motor protected by solid-state overload relay

Other voltages & soft start starters available upon request



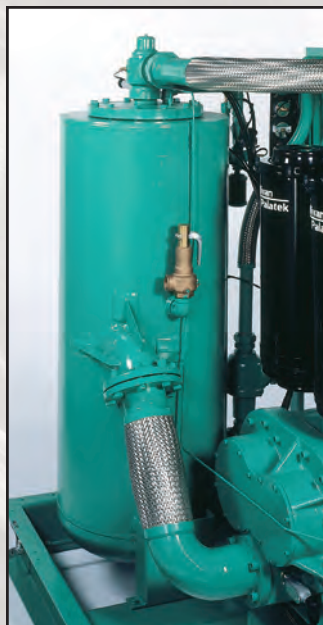
### Protective Devices

- Class 20 solid state overload relay
- High discharge temperature switch
- High pressure shutdown switch
- Anti-start pressure switch (prevent starting while air compressor is pressurized)
- Anti-reversing control (protect against reverse rotation operation)



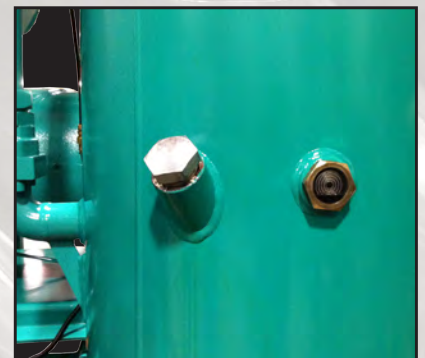
### Fluid Filter

- 40-100 HP: SINGLE ELEMENT
- 125-400 HP: DUAL ELEMENT
- Spin-on type element strategically located for ease of maintenance



### Lube Fill & Level Elbow

- One piece lube fill and sight glass (40-250HP)
- SAE o-ring sight glass (300-400 HP)
- Large SAE o-ring port for ease of fill on larger sizes
- Vented fill cap for pressure release assurance



### Separator Tank

- ASME coded 200PSIG rated tank
- Soft seat relief valve
- Minimum pressure/check valve
- High efficient single stage air/fluid separator element
- Demister pad first stage separation included in 300-400HP
- Flexible steel braided discharge pipe (60-400HP)



### Cooling Systems

- Dedicated fan motor
- Side by side lube cooler and air cooled after-cooler
- Easy cleaning
- Updraft design allows hot air to be recovered or exhausted from top of machine



### Self-Alignment Coupling Assembly

- Adapter mounts to compressor and motor flange
- Positive alignment feature
- Direct driven zero maintenance coupling assembly

### Air Intake Filter

- Oversized dry-type (40-50HP, 125-250HP)
- Throw-away filter assemblies (60-100HP)
- Dual dry-type (300-400HP)
- Easy access replaceable element(s)

### NEW! Stainless Steel Pipe Option for Water Cooled Compressors

- Keeps water-cooled UD compressors running cleaner, longer.
- No rust build-up



### NEW! Inlet/Check Valve

- One piece housing for dependable performance
- Complete range of modulated inlet control
- Anti-reverse air flow check valve

### Acoustical Enclosure (optional)

- Noise reduction insulated acoustical enclosure
- Easy removable access panels for maintenance inspection
- Enclosure fresh incoming air filtration (replaceable)



Analog Control (optional)

### Controls

- Regulated control for full modulation range
- Solenoid controlled unload blow-down valve (reduced power consumption)
- Automatic start/stop
- Timed dual control



125 - 250 UD

## Standard Features

	40, 50, 60	75 & 100	125, 150 200, 250	300, 350, 400
Protective Devices - Circuit Breaker Protection, Three Phase Overload, Phase Protection	•	•	•	•
Lube Fill & Oil Level Sightglass	•	•	•	•
Separator Tank	•	•	•	•
Cooling System with Fan Motor	•	•	•	•
Air Intake Filter	•	•	•	•
Inlet Check Valve	•	•	•	•
Coupling Drive	•	•	•	•
Microprocessor	•	•	•	•
Lube Filter	•	•		
Dual Filter			•	•
<b>OPTIONAL EQUIPMENT</b>				
Acoustical Enclosure	•	•	•	•
Instrumentation gauges	•	•	•	•
Analog Control (not available with VFD)	•	•	•	•
Starters - X-Line, Wye Delta Starters and Solid-State	•	•	•	•
Variable Frequency Drives	•	•	•	•
Water Cooled	•	•	•	•

## Specifications

<b>Model</b>	<b>Drive Motor HP</b>	<b>40</b>	<b>50</b>	<b>60</b>	<b>75</b>	<b>100</b>	<b>125</b>	<b>150</b>	<b>200</b>	<b>250</b>	<b>300</b>	<b>350</b>	<b>400</b>
CAPACITY (CFM)	100 psi						545	750	980	1271	1500	1500	1500
	125 psi	166	210	280	356	440	540	705	900	1125		1490	1490
	150 psi	115	225	225	305	345		615		900			1450
	175 psi	110	160		275	313		540					
	250 psi					240		360					
PRESSURE (PSIG)	100						•	•	•	•	•	•	•
	125	•	•	•	•	•	•	•	•	•		•	•
	150	•	•	•	•	•		•		•			•
	175	•	•		•	•		•					
	250					•		•					
Fan Motor HP	1	1	1.5	2	3	5	5	5	10	15	15	15	15
Sump Capacity (Gal)	3.5	3.5	6	10	10-12	25	25-33	25	25	45	45	45	45
Discharge NPT (inches)	1.25	1.25	1.25	1.5	2	2	2	3	3	3	3	3	3
Length (inches)	66	66	66	80	80	96	96	96	96	120	120	120	120
Width (inches)	34	34	34	45	45	64	64	64	64	66	66	66	66
Height (inches)	48	49	49	60	60	67	67	67	67	76	76	76	76
Weight (lbs)	1050	1215	1460	2100	2250	3900	4025	4535	4600	7300	7400	7400	7800
Weight/Enclosed (lbs)	1350	1515	1760	2500	2650	4475	4600	5110	5175	7900	8000	8000	8400

Description, Specifications and Pictures represented in this brochure may vary from actual equipment purchased.

# **Sullivan Palatek**



## **Electric Driven Industrial Air Compressors**

5-10 HP Belt Driven  
15-40 HP Direct Drive  
40-400 HP Updraft  
High and Low Pressure  
Variable Frequency Drive Designs  
Specialty Packaged Systems

Piston Air Compressors  
Splash Lube  
Pressure Lube  
Gas Driven

Compressed Air Accessories  
Refrigerated Air Dryers  
Desiccant Air Dryers  
Air Filters  
Condensate Management Systems  
Oil Free Systems  
Air System Analysis  
System Management Solutions

## **Diesel Driven Portable Air Compressors**

185 cfm to 1800 cfm  
John Deere, Caterpillar and Cummins Engines  
3 year Air End Warranty  
Utility Models  
Offshore Models

High Pressure Portable and Skid  
950/350 to 1150/350

Instrument Quality Air  
375H to 1600H  
Skid Mount Aftercoolers  
Skid Mount Dryers and Aftercoolers  
Construction Electric 50 to 400 HP  
Electronic Parts Orders Through  
SmartEquip™

Full Line of Pneumatic Tools  
Hoses and Accessories



40-400UD RP 3/12 2M